



Artificial Intelligence in Schools

Utilizing Tools & Detection

Dr. Jayna Suter
Assistant Director,
Educational Technology & Student Performance





Presentation Purpose

Provide the Board of Education with an overview of the role of artificial intelligence (AI) in education

Provide the Board of Education with an update on the plan to move forward with the growing use of AI in education



Agenda

01

Introduction to
AI in Education

02

AI-Powered
Learning Tools

03

AI for Student
Engagement

04

Detection and
Safety Tools

05

Privacy and Legal
Considerations

06

Current Examples
of AI Use

07

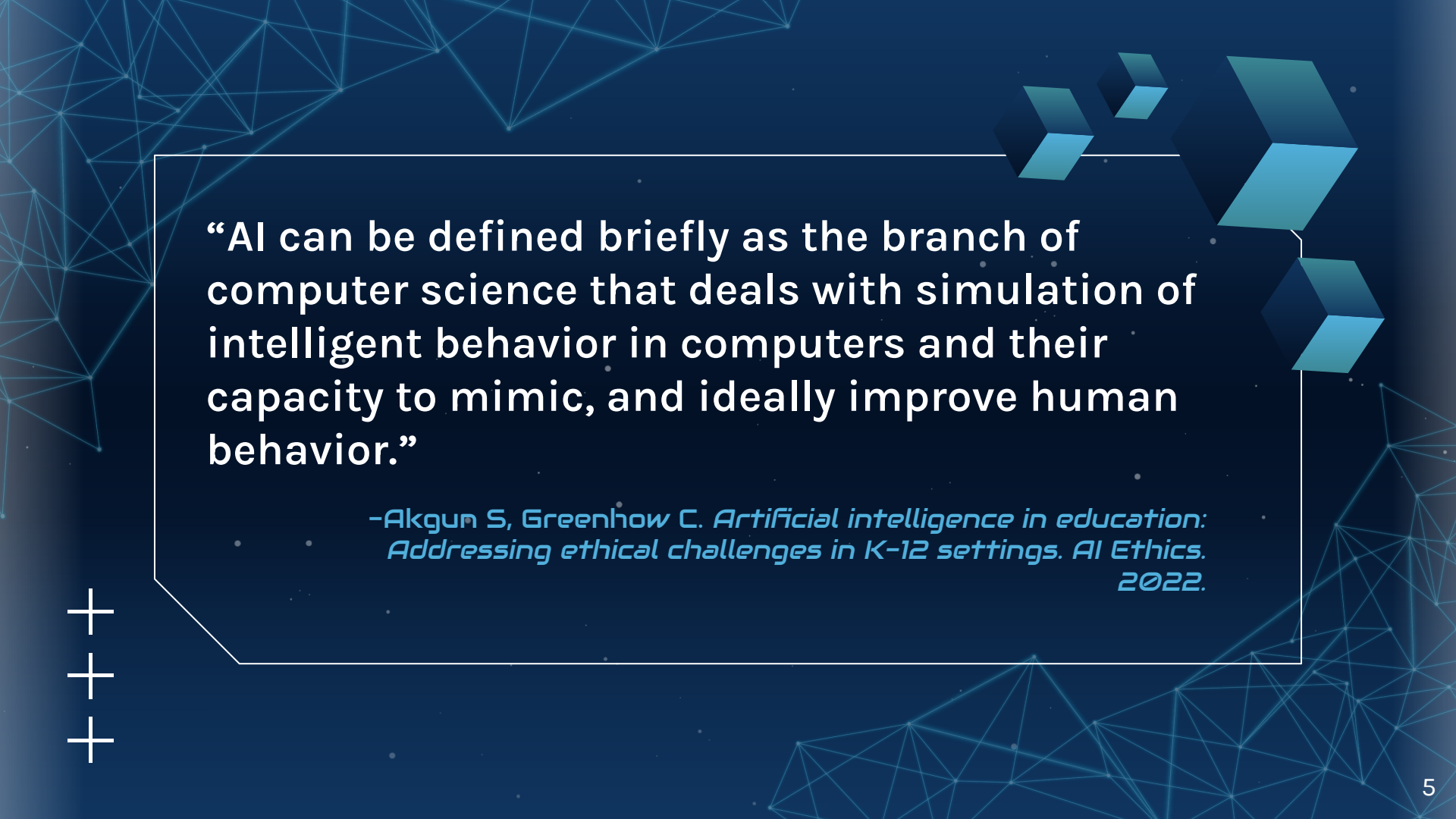
Moving Forward:
Best Practices



01

Introduction to AI in Education





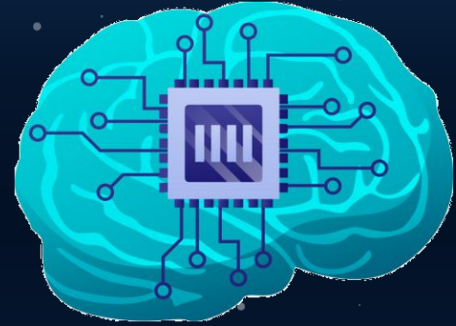
“AI can be defined briefly as the branch of computer science that deals with simulation of intelligent behavior in computers and their capacity to mimic, and ideally improve human behavior.”

-Akgun S, Greenhow C. *Artificial intelligence in education: Addressing ethical challenges in K-12 settings. AI Ethics. 2022.*



Introduction to AI in Education

- Key Features
 - Natural language understanding
 - Text generation
 - Multilingual support
 - Customization options
- Multiple forms of AI used in educational settings





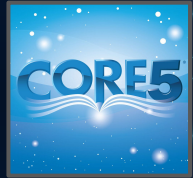
02

AI-Powered Learning Tools



AI-Powered Learning Tools

- Adaptive learning platforms
- Intelligent tutoring systems
- Virtual labs and simulations
- AI-driven content creation





AI For Student Engagement



AI For Student Engagement

- Classroom gamification
- Chatbots for student support
- AI-powered feedback and assessment
- Personalized learning paths






04

Detection and Safety Tools





Detection and Safety Tools

- Plagiarism and AI writing detection
 - Varying results with the same detector
 - Teacher response to AI detection
 - Cybersecurity
 - Early warning systems
 - Mental health and bullying detection systems
- 



05

Privacy and Legal Considerations



Privacy and Legal Considerations

- State and federal student data privacy laws
- Usage of student data by vendors
- Security risks
- Algorithmic bias





06

Current Examples of AI Use



Current Examples of AI Use

- Students
 - Checking grammar/proofreading
 - AI-enabled tutoring
 - Summarization of complex texts
 - Homework and assignment assistance
 - Test preparation
- Teachers
 - Lesson planning
 - Personalized learning plans for students
 - Adaptive learning assignments
- Administrators/Other Staff
 - Parent/teacher communications
 - Teacher and staff professional development
 - Student registration and enrollment





07

Moving
Forward: Best
Practices





Moving Forward: Best Practices

- Continue to monitor the ongoing evolution of AI
 - Discussions of a more consistent approach to the use of and teaching about AI
 - Ongoing professional learning
 - Keeping humans at the center of conversation
 - Review policies to address AI: e.g., District AUPs, student handbooks
 - Maintain communications with District Technology Committee and teacher groups
- 